

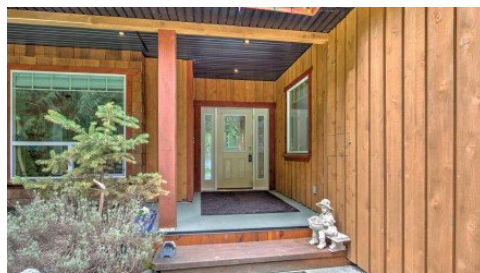
7420 Nantree Rd
Duncan, V0R 3E1



**PEMBERTON
HOLMES** REAL ESTATE
ESTABLISHED 1887

Powered by homes.cowichanvalleycitizen.com

MLS# 995173



\$1,149,900

4 Bedrooms | 3 Bathrooms | 2,547 Sqft

Picturesque 4bdrm, 3 bath family home on a park-like 2.5 level acres! You'll find immediate peace & privacy as you wind down the driveway & throughout this serene property. The home offers a bright & open main level consisting of a big country kitchen with island, pantry & airy dining area, living room with a cozy woodstove, spacious primary bdrm with walk-in closet & ensuite with his & her vanity, tub & separate shower, a guest powder room, a large family room, laundry & lots of windows throughout to take in light & the beautiful surroundings. Upstairs are 3 more generous bedrooms & a 3rd full bath. Multiple spaces to enjoy the great outdoors including a partially covered back deck complete with hot tub, a firepit & gazebo beside your very own pond, mature natural landscaping & lake access just a short walk away. Room for expansion with zoning allowing for a detached secondary suite too! Looking for quiet & private rural living? This is it!



Ally Earle

Phone: (250) 710-8794

Pemberton Holmes Duncan

Office: (250) 856-0101

For full listing details, please scan:

